
SD-ATIP series IP High Speed Dome

With object auto-tracking feature

SD-ATIP series high speed dome cameras are the most innovative IP high speed dome cameras with intelligent object auto-tracking feature. With the video analysis and recognition, the auto tracking speed dome cameras can automatically lock and track a moving object and thus to realize full-time unattended surveillance.



Benefit of IP networking feature

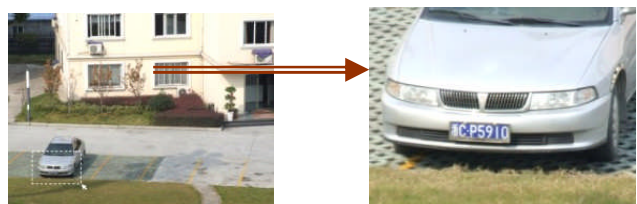
- **Save cabling cost:** you can often take advantage of existing network wiring. This can make the installation task much easier
- **Easier connection:** just one network cable to transmit video/audio/control data, no video cable and RS-485 cable will be required.
- **Remote access from anywhere**
- **Better wireless Option:** IP cameras have encryption built right into them providing for a more secure network. Interference is also not a problem with IP-based models.

Outstanding Features

➤ Intelligent Object auto-tracking

- Auto search and track on moving object, with adjustable precision and tracking strategy;
- The user can also manually lock an object, the camera will then keep tracking this object, and neglect other moving objects.
- Support alarm linkage when there is object detected.
- Filtering background noise. For example, the camera can keep tracking a moving car, but neglect the wing of tree.

➤ Intelligent 3D positioning (*)



-
- **High speed Pan/Tilt movement**, pan speed: 0.2~200°/sec; Tilt speed: 0.2~180°/sec
 - **Seamless monitoring, 360°** continuous pan, One-click to place center and magnify
 - **OSD Menu Operation**
 - **Privacy Mask to block sensitive scenes**
 - **Day/night surveillance**
 - **256 presets, auto Scan / Pattern Scan / Cruise Scan**
 - **Soft-address/protocol/baud rate**, support remote setup



Note: (*) The function of 3D intelligent poisoning need to work with our DVRs.

Functions

- H.264 hardware compression
- Object auto-tracking feature
- Integrate Sony high resolution DSP CCD camera
- OSD screen menu operation
- 3D intelligent poisoning
- 6 auto cruising tracks function, each cruising track set up 16 preset positions, set staying time of each preset position available.
- 360°continuous pan without blind point
- Schedule action, such as call preset, cruise plan, auto scan, etc.
- Park action
- Power up auto run function
- Memory protection when power outage: the dome auto resumes its prior position before the power outage after reboot
- Proportional high speed Pan/Tilt movement
- Auto iris, auto focus, auto white balance
- Backlight compensation
- Display temperature/coordinate/time/date/zoom information.
- Support alarm linkage, 6 alarm input, 2 alarm output.
- Control format: Manchester and RS-485
- Compatible with popular protocols such as Pelco "P" / "D" protocol, etc.
- Support remote setup address/protocol/baud rate.
- Dedicated motor-driven pan/tilt, very accurate positioning
- High quality stepping motor, differential coefficient driver, run placidly, no dithering, no noise.
- Auto detection of fault information

- High quality Dome housing structure
 - Aluminum alloy crust, transparent dome cover, black un-transparent dome
 - Modularized structure
 - Compliant with IP66 standard. CE, FCC standard
 - Built-in surge and lightning strike protector
 - Cooling and temperature control design.

Network Functions

- H.264 video compression and the latest Davinci processing chip and platform, ensuring stable and reliable performance
- View and control of video images via IE browser and client software
- 3 user levels defined for operation permission
- Dual stream technology
- Multiple network protocols supported: TCP/IP, HTTP, DHCP, DNS, RTP/RTCP, PPPoE (FTP, SMTP, NTP, SNMP addible)

Specification

Model	SD-ATIP1800-W6	SD-ATIP1803-W6	SD-ATIP2600-W6	SD-ATIP3600-W6
Camera				
Signal Format	PAL / NTSC			
Image Sensor	1/4 Inch SONY EXVIEW CCD			
Effective Pixels	PAL: 752 (H)×582 (V) NTSC: 768 (H)×494 (V)			
Horizontal Resolution	480TVL			530TVL
S/N Ratio	Better than 50dB			
Illumination	1.0Lux/F1.4	0.7Lux/F1.4(Color) 0.01Lux/F1.4(B/W)	1.0Lux/F1.6(Color) 0.01Lux/F1.6(B/W)	1.4Lux / F1.4 (Color) 0.01Lux / F1.4 (B/W)
Day / Night	No	Yes		
Optical Zoom	18X	18x	26X	36X
Digital Zoom	12X			
Lens	F1.4-F3.0 f=4.1-73.8mm	F1.6-F3.8 f=4-88mm	F1.6-F3.8 f=3.5-91mm	F 1.6-4.5 f=3.4-122.4mm
Privacy Mask	24 privacy masks programmable; a maximum of 8 zones can be masked simultaneously on the same video screen			
White Balance	Auto / Manual / ATW / Indoor / Outdoor			
AGC	Auto / Manual			
BLC	On / Off			
Angle of View	48-2.8degree(Wide-Tele)		48-1.6degree (Wide-Tele)	57.8-1.7degree (Wide-Tele)

Min. Working Distance	10-800mm (Wide-Tele)	10-1500mm(Wide-Tele)	
Aperture Range	F1.4-F3.0	F1.4-F3.8	F1.6-F4.5
Dome Drives			
Pan Range	360° endless		
Pan Speed	Pan Manual Speed: 0.2~200°/sec; Pan Preset Speed: 400°/s		
Vertical Range	90° (Auto Flip)		
Tilt Speed	Tilt Manual Speed: 0.2°~180°/s, Tilt Preset Speed: 200°/s		
Number of Preset	256		
Patrol	6 cruise track, each track up to 16 presets		
Pattern	4 patterns		
Parameter Restore	Support		
Park Action	Preset / Cruise / Pattern / auto scan		
PTZ Position Display	On / Off		
Track Accuracy	0.1 Degree		
Alarm input	6		
Alarm output	2		
Network			
Ethernet	10Base-T / 100Base-TX, RJ45 connector (Fiber Connector Option)		
Frame Rate	704x576 (25fps)		
Image Compression	H.264		
Protocols	TCP/IP, HTTP, DHCP, DNS, RTP / RTCP, PPPoE (FTP, SMTP, NTP, SNMP addible)		
No. of Simultaneous Users	Up to 6 users		
Dual Streams	Support		
User/Host Level	3 Levels: Administrator, Camera control, Live only		
Security Measures	User authentication (ID and PW), Host authentication (MAC address)		
General			
Comm. Port	RS485		
Protocols	Pelco-D, Pelco-P, etc.		
Baud Rate	2400bps, 4800bps, 9600bps		
Power Supply	DC24V, 50/60Hz		
Power Consumption	Indoor 15W / Outdoor 60W (with heating)		
Working Temperature	Indoor housing: -10 ~ 50°C; Outdoor housing: -40 ~ 60°C		
Protection Level	IP66 standard (outdoor dome) lightning protection, surge protection and voltage transient protection		
Mounting	Various mounting modes option		
Dimension	Wall mount: Φ240(mm)×268(mm); Ceiling mount: Φ210(mm)×215(mm)		
Weight	Wall mount: 7kg Ceiling mount: 6kg		