

## SD-IR series Intelligent High Speed Dome

SD-IR series high speed dome cameras are intelligent high speed dome cameras, features with 3D intelligent positioning, OSD menu operation and 360° seamless monitoring.



IR LEDs

**SD-IR1800**

**SD-IR1803**

**SD-IR2600**

**SD-IR3600**



IR Array

**SD-IR1800-array**

**SD-IR1803-array**

**SD-IR2600-array**

**SD-IR3600-array**

### Outstanding Features

- **With built-in IR LEDs/IR array for 24 hours surveillance**
- **Special aluminum alloy crust, designed for outdoor application**
- **Strong anti-shake capability, suitable for vehicle monitoring**

- **Intelligent 3D positioning (\*)**
- **High speed Pan/Tilt movement,**  
pan speed: 0.2~200°/sec; Tilt speed:  
0.2~180°/sec



One-click to place center and magnify

- **Seamless monitoring, 360° continuous pan, 180° audio flip tilt**

- **OSD Menu Operation**

- **Privacy Mask to block sensitive scenes**



- **256 presets, auto Scan / Pattern Scan / Cruise Scan**

---

➤ **Soft-address/protocol/baud rate**, support remote setup

➤ **Schedule action**, such as call preset, cruise plan, auto scan, etc.

Note: (\*) The function of 3D intelligent poisoning need to work with our DVRs.

➤ **Optional features module**

- H.264 IP networking module
- Object auto-tracking module

## Functions

- Integrate Sony high resolution DSP CCD camera
- OSD screen menu operation
- 3D intelligent poisoning
- 6 auto cruising tracks function, each cruising track set up 16 preset positions, set staying time of each preset position available.
- 360°continuous pan without blind point
- 8 schedule action
- Park action
- Power up auto run function
- Memory protection when power outage: the dome auto resumes its prior position before the power outage after reboot
- Proportional high speed Pan/Tilt movement
- Auto iris, auto focus, auto white balance
- Backlight compensation
- Display temperature/coordinate/time/date/zoom information.
- Support alarm linkage, 6 alarm input, 2 alarm output.
- Control format: Manchester and RS-485
- Compatible with popular protocols such as Pelco "P" / "D" protocol, etc.
- Support remote setup address/protocol/ baud rate.
- Dedicated motor-driven pan/tilt, very accurate positioning
- High quality stepping motor, differential coefficient driver, run placidly, no dithering, no noise.
- Auto detection of fault information
- Built-in surge and lightning strike protector
- Compliant with IP66 standard. CE, FCC standard
- Support DC10V-18V car voltage.

## Specification

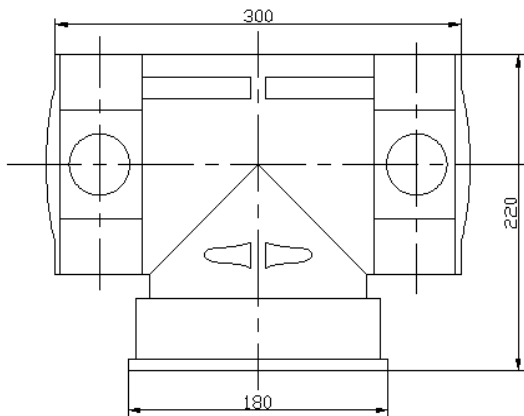
Model	SD-IR1800 SD-IR1800-array	SD-IR1803 SD-IR1803-array	SD-IR2600 SD-IR2600-array	SD-IR3600 SD-IR3600-array
<b>Camera</b>				
Signal Format	PAL / NTSC			
Image Sensor	1/4 Inch SONY EXVIEW CCD			
Effective Pixels	PAL: 752 (H)×582 (V)			
	NTSC: 768 (H)×494 (V)			
Horizontal Resolution	480TVL			530TVL
S/N Ratio	Better than 50dB			
Illumination	1.0Lux/F1.4	0.7Lux/F1.4(Color)	1.0Lux/F1.6(Color)	1.4Lux / F1.4 (Color)
		0.01Lux/F1.4(B/W)	0.01Lux/F1.6(B/W)	0.01Lux / F1.4 (B/W)

Day / Night	No	Yes		
Optical Zoom	18X	18x	26X	36X
Digital Zoom	12X			
Lens	F1.4-F3.0 f=4.1-73.8mm	F1.6-F3.8 f=4-88mm	F1.6-F3.8 f=3.5-91mm	F 1.6-4.5 f=3.4-122.4mm
Privacy Mask	8 zones			
White Balance	Auto / Manual / ATW / Indoor / Outdoor			
AGC	Auto / Manual			
BLC	On / Off			
Angle of View	48-2.8degree(Wide-Tele)		48-1.6degree (Wide-Tele)	57.8-1.7degree (Wide-Tele)
Min. Working Distance	10-800mm (Wide-Tele)		10-1500mm(Wide-Tele)	
Aperture Range	F1.4-F3.0		F1.4-F3.8	F1.6-F4.5
<b>Dome Drives</b>				
Pan Range	360° endless			
Pan Speed	Pan Manual Speed: 0.2~80°/sec;			
	Pan Preset Speed: 100°/s			
Vertical Range	90° (Auto Flip )			
Tilt Speed	Tilt Manual Speed: 0.2°~80°/s,			
	Tilt Preset Speed: 100°/s			
Number of Preset	128			
Patrol	6 cruise track, each track up to 16 presets			
Pattern	4 patterns			
Parameter Restore	Support			
Park Action	Preset / Cruise / Pattern / auto scan			
PTZ Position Display	On / Off			
Alarm input	6			
Alarm output	2			
<b>General</b>				
Comm. Port	RS485			
Protocols	Pelco-D,Pelco-P, etc.			
Baud Rate	2400bps, 4800bps, 9600bps			
Working Temperature	-35 ~ 55°C			
Humidity	<90%			
Protection Level	IP66 standard lightning protection, surge protection and voltage transient protection			

---

Anti-shock	$\geq 4G$
Power Supply	DC10.5 ~ DC18V (3.5A Car power); AC24V (2.5A)
Dimension	287(mm)x218(mm);
Weight	about 6kg

## Dimension



## Optional Mount kits



Optional vehicle mount kit



Optional Wall-mount kit