

## SD-S series Intelligent High Speed Dome

SD-S series high speed dome cameras are intelligent high speed dome cameras, features with 3D intelligent positioning, OSD menu operation and 360° seamless monitoring.



6" outdoor

SD-S1800-W6  
SD-S1803-W6  
SD-S2600-W6  
SD-S3600-W6



6" indoor

SD-S1800-C6  
SD-S1803-C6  
SD-S2600-C6  
SD-S3600-C6



6" indoor

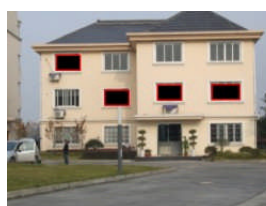
SD-S1800-P6  
SD-S1803-P6  
SD-S2600-P6  
SD-S3600-P6

### Outstanding Features

- **Intelligent 3D positioning (\*)**
- **High speed Pan/Tilt movement,**  
pan speed: 0.2~200°/sec; Tilt speed: 0.2~180°/sec
- **Seamless monitoring, 360° continuous pan, 180° audio flip tilt**
- **OSD Menu Operation**
- **Privacy Mask to block sensitive scenes**
- **256 presets, auto Scan / Pattern Scan / Cruise Scan**
- **Day/night surveillance**
- **Soft-address/protocol/baud rate**, support remote setup
- **Schedule action**, such as call preset, cruise plan, auto scan, etc.



One-click to place center and magnify



Note: (\*) The function of 3D intelligent positioning need to work with our DVRs.

---

## Functions

- Integrate Sony high resolution DSP CCD camera
- OSD screen menu operation
- 3D intelligent poisoning
- 6 auto cruising tracks function, each cruising track set up 16 preset positions, set staying time of each preset position available.
- 360°continuous pan without blind point
- 8 schedule action
- Park action
- Power up auto run function
- Memory protection when power outage: the dome auto resumes its prior position before the power outage after reboot
- Proportional high speed Pan/Tilt movement
- Auto iris, auto focus, auto white balance
- Backlight compensation
- Display temperature/coordinate/time/date/zoom information.
- Support alarm linkage, 6 alarm input, 2 alarm output.
- Control format: Manchester and RS-485
- Compatible with popular protocols such as Pelco "P" / "D" protocol, etc.
- Support remote setup address/protocol/ baud rate.
- Dedicated motor-driven pan/tilt, very accurate positioning
- High quality stepping motor, differential coefficient driver, run placidly, no dithering, no noise.
- Auto detection of fault information
  
- High quality Dome housing structure
  - Aluminum alloy crust, transparent dome cover, black un-transparent dome
  - Modularized structure
  - Compliant with IP66 standard. CE, FCC standard
  - Built-in surge and lightning strike protector
  - Cooling and temperature control design.

## Specification

Model	SD-S1800-W6 SD-S1800-C6 SD-S1800-P6	SD-S1803-W6 SD-S1803-C6 SD-S1803-P6	SD-S2600-W6 SD-S2600-C6 SD-S2600-P6	SD-S3600-W6 SD-S3600-C6 SD-S3600-P6
<b>Camera</b>				
Signal Format	PAL / NTSC			
Image Sensor	1/4 Inch SONY EXVIEW CCD			
Effective Pixels	PAL: 752 (H)×582 (V) NTSC: 768 (H)×494 (V)			
Horizontal Resolution	480TVL			530TVL
S/N Ratio	Better than 50dB			
Illumination	1.0Lux/F1.4	0.7Lux/F1.4(Color) 0.01Lux/F1.4(B/W)	1.0Lux/F1.6(Color) 0.01Lux/F1.6(B/W)	1.4Lux / F1.4 (Color) 0.01Lux / F1.4 (B/W)
Day / Night	No	Yes		
Optical Zoom	18X	18x	26X	36X
Digital Zoom	12X			
Lens	F1.4-F3.0 f=4.1-73.8mm	F1.6-F3.8 f=4-88mm	F1.6-F3.8 f=3.5-91mm	F 1.6-4.5 f=3.4-122.4mm
Privacy Mask	24 privacy masks programmable; a maximum of 8 zones can be masked simultaneously on the same video screen			
White Balance	Auto / Manual / ATW / Indoor / Outdoor			
AGC	Auto / Manual			
BLC	On / Off			
Angle of View	48-2.8degree(Wide-Tele)		48-1.6degree (Wide-Tele)	57.8-1.7degree (Wide-Tele)
Min. Working Distance	10-800mm (Wide-Tele)		10-1500mm(Wide-Tele)	
Aperture Range	F1.4-F3.0		F1.4-F3.8	F1.6-F4.5
<b>Dome Drives</b>				
Pan Range	360° endless			
Pan Speed	Pan Manual Speed: 0.2~200°/sec; Pan Preset Speed: 400°/s			
Vertical Range	90° (Auto Flip )			
Tilt Speed	Tilt Manual Speed: 0.2°~180°/s, Tilt Preset Speed: 200°/s			
Number of Preset	256			
Patrol	6 cruise track, each track up to 16 presets			
Pattern	4 patterns			
Parameter Restore	Support			
Park Action	Preset / Cruise / Pattern / auto scan			
PTZ Position Display	On / Off			

Track Accuracy	0.1 Degree
Alarm input	6
Alarm output	2
<b>General</b>	
Comm. Port	RS485
Protocols	Pelco-D, Pelco-P, etc.
Baud Rate	2400bps, 4800bps, 9600bps
Power Supply	DC24V, 50/60Hz
Power Consumption	Indoor 15W / Outdoor 60W (with heating)
Working Temperature	Indoor housing: -10 ~ 50°C; Outdoor housing: -40 ~ 60°C
Protection Level	IP66 standard (outdoor dome) lightning protection, surge protection and voltage transient protection
Mounting	Various mounting modes option
Dimension	Wall mount: $\Phi 240(\text{mm}) \times 268(\text{mm})$ ; Ceiling mount: $\Phi 210(\text{mm}) \times 215(\text{mm})$
Weight	Wall mount: 7kg Ceiling mount: 6kg